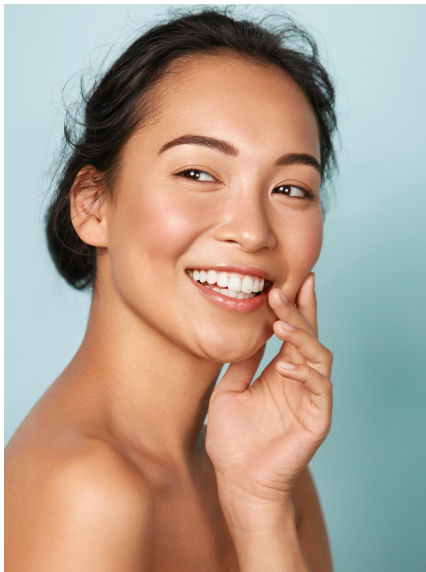




SKIN CARE

AS40154 | CARING BUTTER

High Natural Origin Content

NATURALITY
PROFILE
according to
ISO 16128 norm

NOC=99,1%

Nude skin feel

Moisturization

Soothing

A	MONTANOV™ 202	3.00%
	EMOGREEN™ L15	10.00%
	Caprylic Capric Triglyceride	4.00%
	Hydrogenated Olive Oil Decyl Esters	1.00%
	C10-18 Triglyceride	1.00%
	Bees Wax	1.00%
	Carnauba Acid Wax	0.60%
B	Butyrospermum Parkii (Shea Butter)	2.80%
	Tribehenin	2.20%
	SEPLIFIT™ DPHP	1.00%
	Tocopherol	0.30%
C	Pure Water	Up to 100.00%
	SOLAGUM™ TARA	0.15%
	Glycerin	4.00%
D	L-Arginine	0.10%
	SEPLIFIT™ NUDE	2.20%
E	AQUAXYL™	3.00%
	Phenoxyethanol - Chlorphenesin - Glycerin	0.80%
F	MADECASSOSIDE	0.20%
	Pure Water	2.00%
F	Lavandula Angustifolia Oil	0.05%
	Rosmarinus Officinalis Leaf Oil	0.05%

With WESOURCE

White Thick Cream / Packaging: Jar

pH: 5.5 / **VISCOSITIES:** 1M at RT: 612 000 mPa.s Brookfield LVT96-6**Recovery at RT (after 1M at 45°C):** 612 000 mPa.s Brookfield LVT96-6.**STABILITY:** Stable D7 at RT, 45°C, -18°C and cycles -5°C/+40°C.

PROCEDURE ADVICES: Heat phase A to 80°C. Disperse **SOLAGUM™ TARA** in water and heat phase B to 80°C. Pre-disperse phase C in phase A, add phase B into phase (A+C), homogenize it by Silverson at 4000 rpm for 5 minutes. Stir the emulsion under anchor stirring 100 rpm for 10 min. Mix phase E until clear. Add phase D, E and F into the emulsion and stir it under anchor stirring at 150 rpm until uniform. Hot-fill in jars.

No more compromise! A natural origin butter with an amazing skin feel, a long term hydration and comfort!

From *Caesalpinia spinosa* endosperm seeds, **SOLAGUM™ TARA** is a powerful thickening natural gum. (*Caesalpinia Spinosa Gum*) Synergistic efficiency with synthetic and natural polymers. **Ecocert, Cosmos and Natrue approved.**

SEPLIFIT™ NUDE provides a quick-break effect and a nude skin feel.

(Sodium Acrylate/Sodium Acryloyl Dimethyl Taurate Copolymer - C15-19 Alkane - Polyglyceryl-6 Laurate and Polyglycerin-6)

Pre-neutralized liquid polymeric thickener on a wide range of pH (5.5 to 12). This polymer has **61% of natural origin content** according to **ISO 16128**. **SEPLIFIT™ NUDE** allows formulating from sprayable to thick textures.

MONTANOV™ 202 associated with **AQUAXYL™** offers long term moisturizing effect!

Promoter of liquid crystals, **MONTANOV™ 202** maintains skin moisturization over time. (*Arachidyl Alcohol - Behenyl Alcohol - Arachidyl Glucoside*)

Glucolipid emulsifier derived from vegetable origin. Thanks to liquid crystals which contain water, it helps to keep skin moisturized. **Ecocert and Natrue approved.**

AQUAXYL™ moisturizes and restructures the skin by harmonizing the hydric flow of the skin. (*Xylitylglucoside - Anhydroxylytol - Xylitol*)

Cosmos approved and Natrue certified

Beyond the lightweight and non-greasy skin feel, **EMOGREEN™ L15** gives a powdery finish. (*C15-19 Alkane (Plant-based & Renewable)*)

It is a non polar and readily biodegradable, bio-sourced emollient. It's THE alternative to volatile silicone oils. **Cosmos approved and Natrue certified.** Inert and stable, it can be used in all types of applications.

Pure active from *Centella Asiatica*, **MADECASSOSIDE** soothes and brings comfort to sensitive skin and atopic-prone skin. (*Madecassoside*)

Anti-wrinkle ingredient, **SEPLIFIT™ DPHP** moisturizes the skin and reduces the appearance of visible signs of aging. (*Dipalmitoyl Hydroxyproline*) **Ecocert and Natrue approved.**

ADDITIONAL INGREDIENTS: Caprylic Capric Triglyceride; Myritol 318 (BASF) / C10-18 Triglyceride; Dub Cire H1 (STEARINERIE DUBOIS) / Hydrogenated Olive Oil Decyl Esters (VATANGE) / Bees Wax (KAHL) / Carnauba Acid Wax (KAHL) / Butyrospermum Parkii (Shea Butter); Lipex Shea (AAK) / Tocopherol (DSM) / Tribehenin; Lipovol GBT (VANTAGE) / Phenoxyethanol - Chlorphenesin - Glycerin; Microcare PHC (THOR) / Lavandula Angustifolia (Lavender) Oil (PUEN) / Rosmarinus Officinalis (Rosemary) Leaf Oil (PUEN).

More informations available on seppic.com

All information contained herein is intended merely to demonstrate the utility of SEPPIC products, and should not be construed as granting license to practice any compositions or methods covered by a patent or a patent application. All information contained in this specific technical documentation is believed to be accurate and has been set up by SEPPIC according to its own described methods and processes. SEPPIC however does not assume any liability or risks involved in the use of its products for the preparation and the assessment of the hereinabove formulation since the condition of use are beyond its control. SEPPIC customer must insure that the duplication of the hereinabove formulation is not infringing any intellectual property rights and that it complies with any regulatory status.

Air Liquide
HEALTH CARE